



SL0004 Updating Front and Rear ECU Programs via SMARTlift Diagnostic Port

SL0004	Version 1	SMARTlift	09-07-05
--------	-----------	-----------	----------

Note: The SMARTlift System consists of two ECU's one on each crane. **Both** ECU's must be updated at the same time using the method below.

- With the SMARTlift system 'ON' and the diesel engine running, plug the Downloading Tool (EL-34366) between the SMARTlift Diagnostic Port and PC USB port.

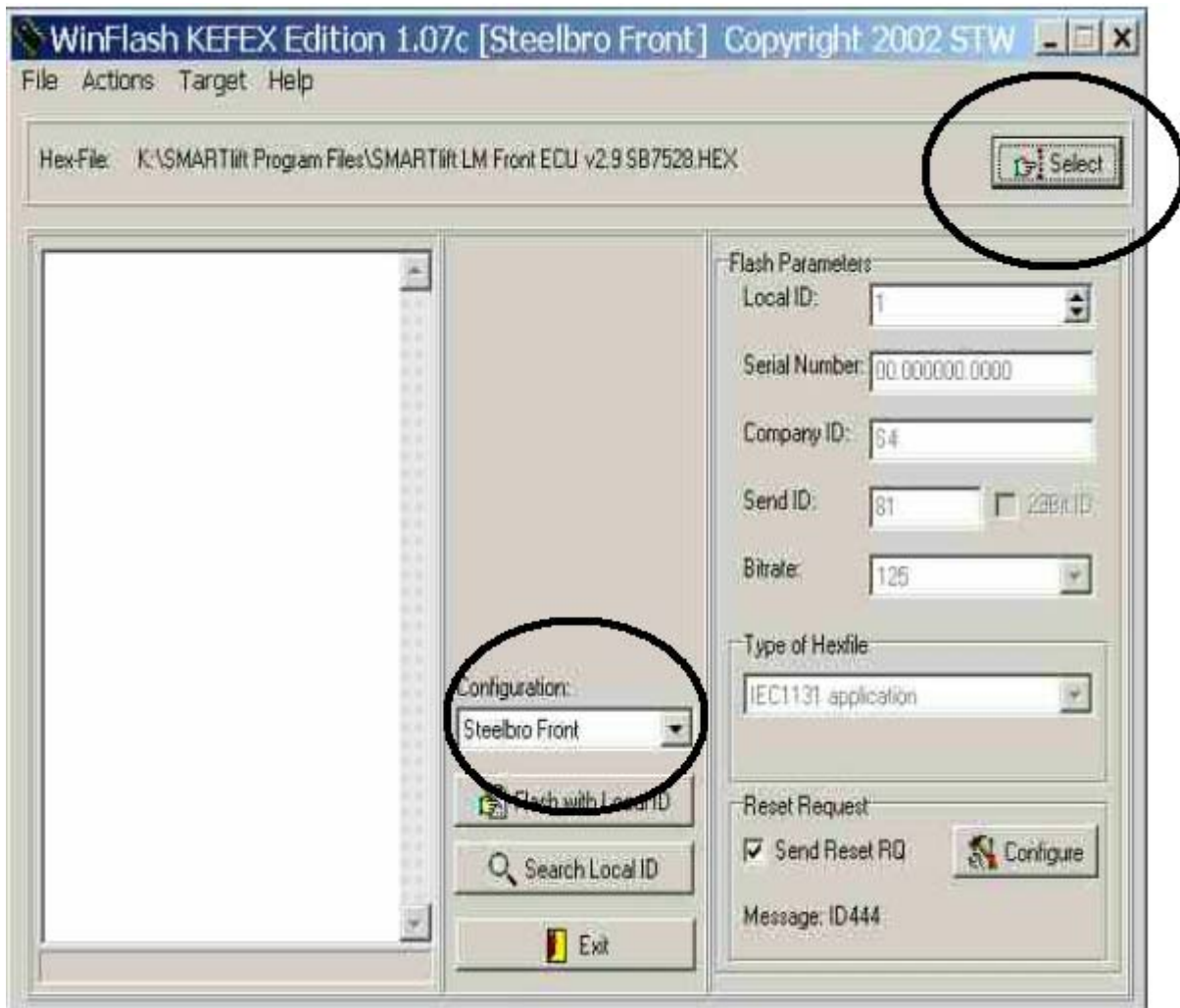


- Start Winflash using the icon;





- **FIRST:** In the 'Configuration' box choose Steelbro Front and then **SECOND** use the 'Select' Button to navigate to the appropriate .hex file.



- Ensure the settings are as shown in Figure 3.
- Press the button 'Flash with Local ID'.
 1. Wait until the 'Flashing Finished' dialogue box is displayed. Select 'Do not start (stay in sleep mode)'
 2. In the 'Configuration' box choose Steelbro Rear and then use the 'Select' Button to navigate to the appropriate .hex file.
 3. Press the button 'Flash with Local ID'.
 4. Wait until the 'Flashing Finished' dialogue box is displayed. Select 'Do not start (stay in sleep mode)'
 5. Turn off the system by switching off the radio remote.
- Re-start and check all functions and safety features for correct operation.